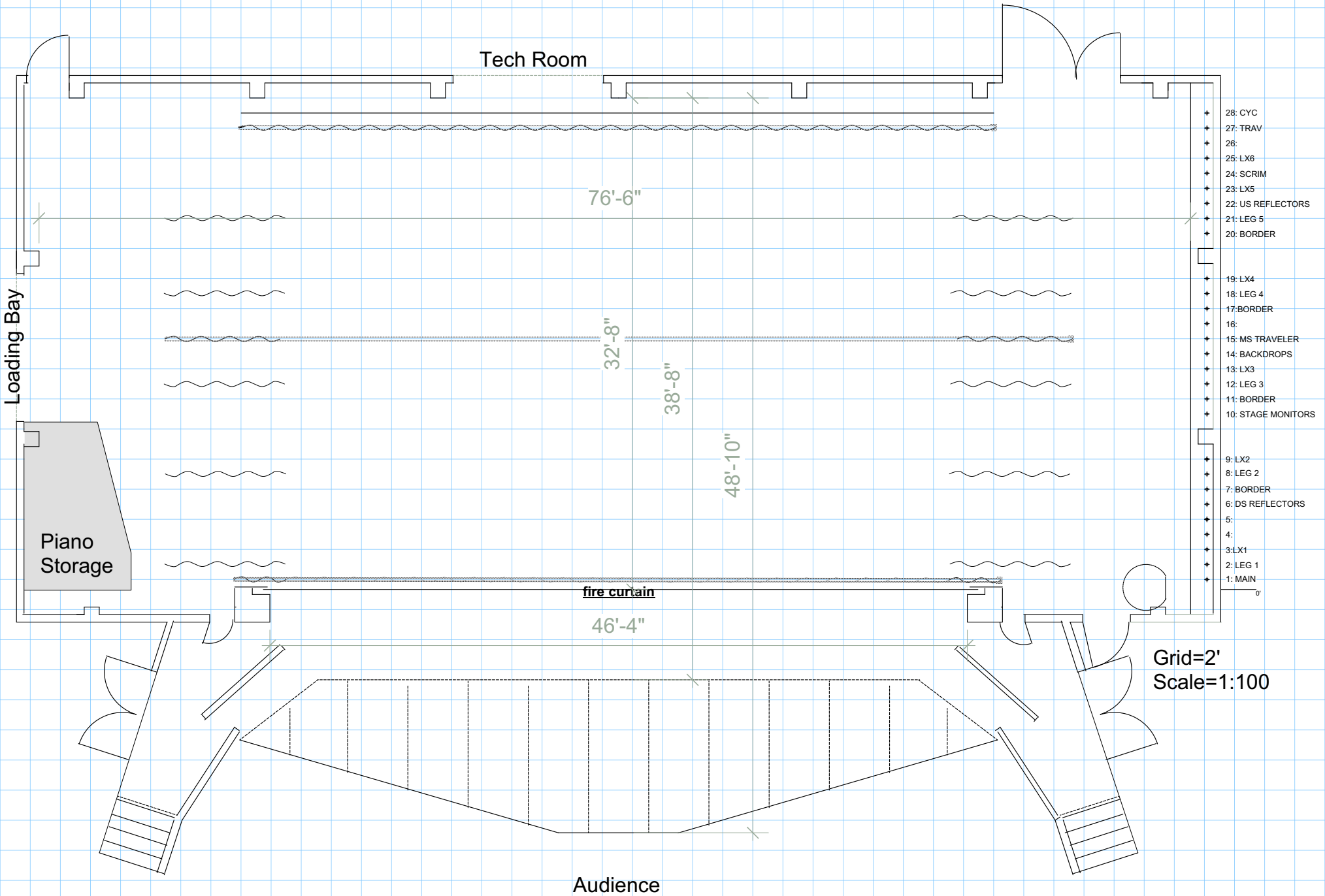


Kelowna Community Theatre Stage Plot



- 28: CYC
- 27: TRAV
- 26:
- 25: LX6
- 24: SCRIM
- 23: LX5
- 22: US REFLECTORS
- 21: LEG 5
- 20: BORDER
- 19: LX4
- 18: LEG 4
- 17: BORDER
- 16:
- 15: MS TRAVELER
- 14: BACKDROPS
- 13: LX3
- 12: LEG 3
- 11: BORDER
- 10: STAGE MONITORS
- 9: LX2
- 8: LEG 2
- 7: BORDER
- 6: DS REFLECTORS
- 5:
- 4:
- 3: LX1
- 2: LEG 1
- 1: MAIN

Grid=2'
Scale=1:100

Audience